

RETAIL & OFFICE SPACE FOR LEASE

STREETSBORO, OHIO

LIBERTY CORNERS PLAZA

LIBERTY CORNERS PLAZA



FACT SHEET

STREETSBORO, OHIO

LIBERTY CORNERS PLAZA

Property Highlights

Located at the Prominent Corner of State Route 43 and Market Square Drive

- Retail Spaces: Customizable units ranging from 1,300 to 3,500 square feet, ideal for retailers, restaurants, or service providers seeking a prime location.
- Office Space: A spacious and private entire second floor available for lease—perfect for professional firms, coworking, or creative industries.

Key Features:

- 5,230 SF of Office Space Available
- Servicing an affluent and growing customer base with a 3-mile population of over 19,000 and 5-mile population exceeding 45,000, projected to grow further by 2029.
- Average household income of \$119,130 (3 miles) and \$163,027 (5 miles), offering a high-spending market for your business.
- Great Access to Interstate 480 Streetsboro is a well-known access point to the Ohio Turnpike
- -72,289 VPD at Turnpike Entrance
- Only 15 Minutes from Kent State University - 2024 Enrollment: 23,788 students



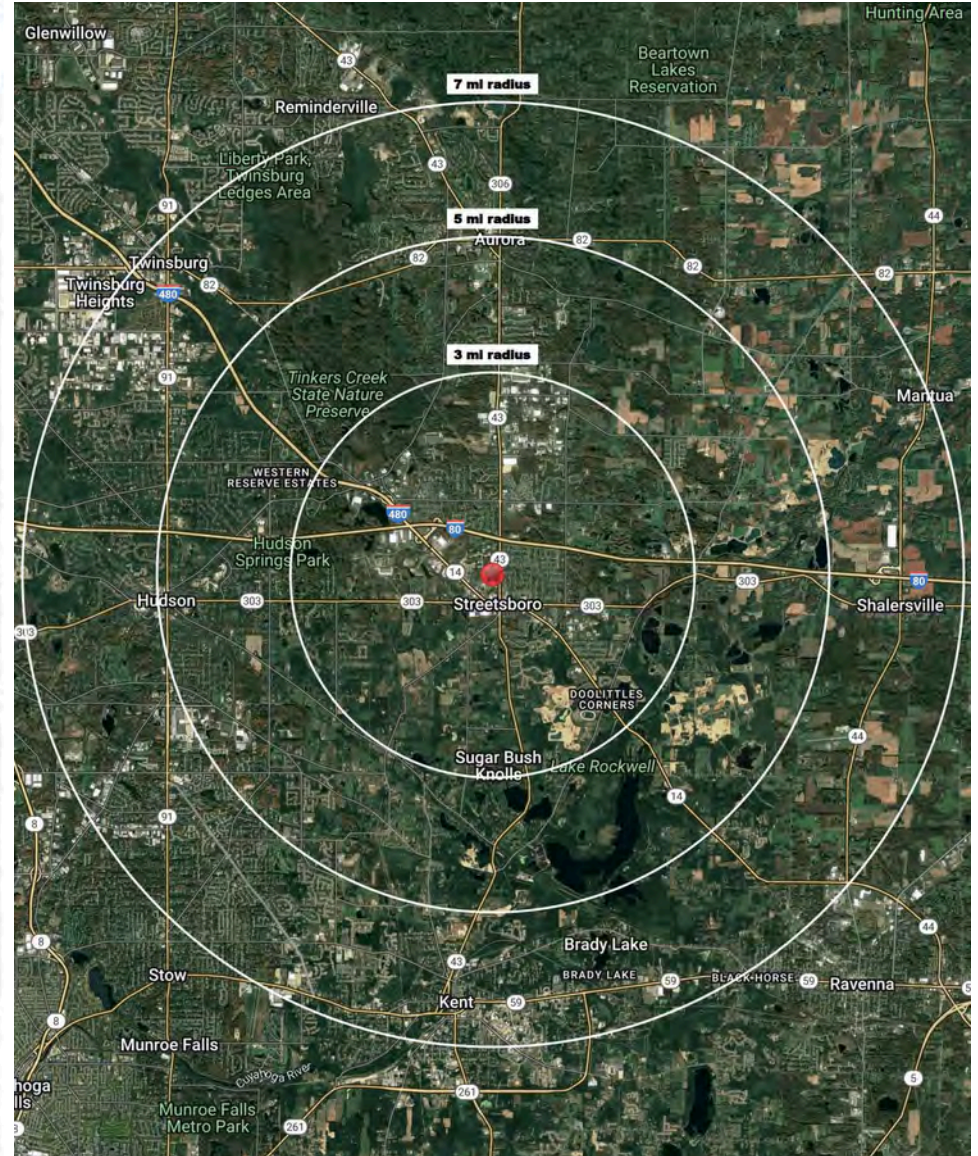
Area Demographics	3 mi.	5 mi.	7 mi.
Total Population	19,054	45,512	122,364
Avg. Household Income	\$119,130	\$163,027	\$138,096
Daytime Employees	12,261	19,008	58,015

RADIUS MAP

STREETSBORO, OHIO

LIBERTY CORNERS PLAZA

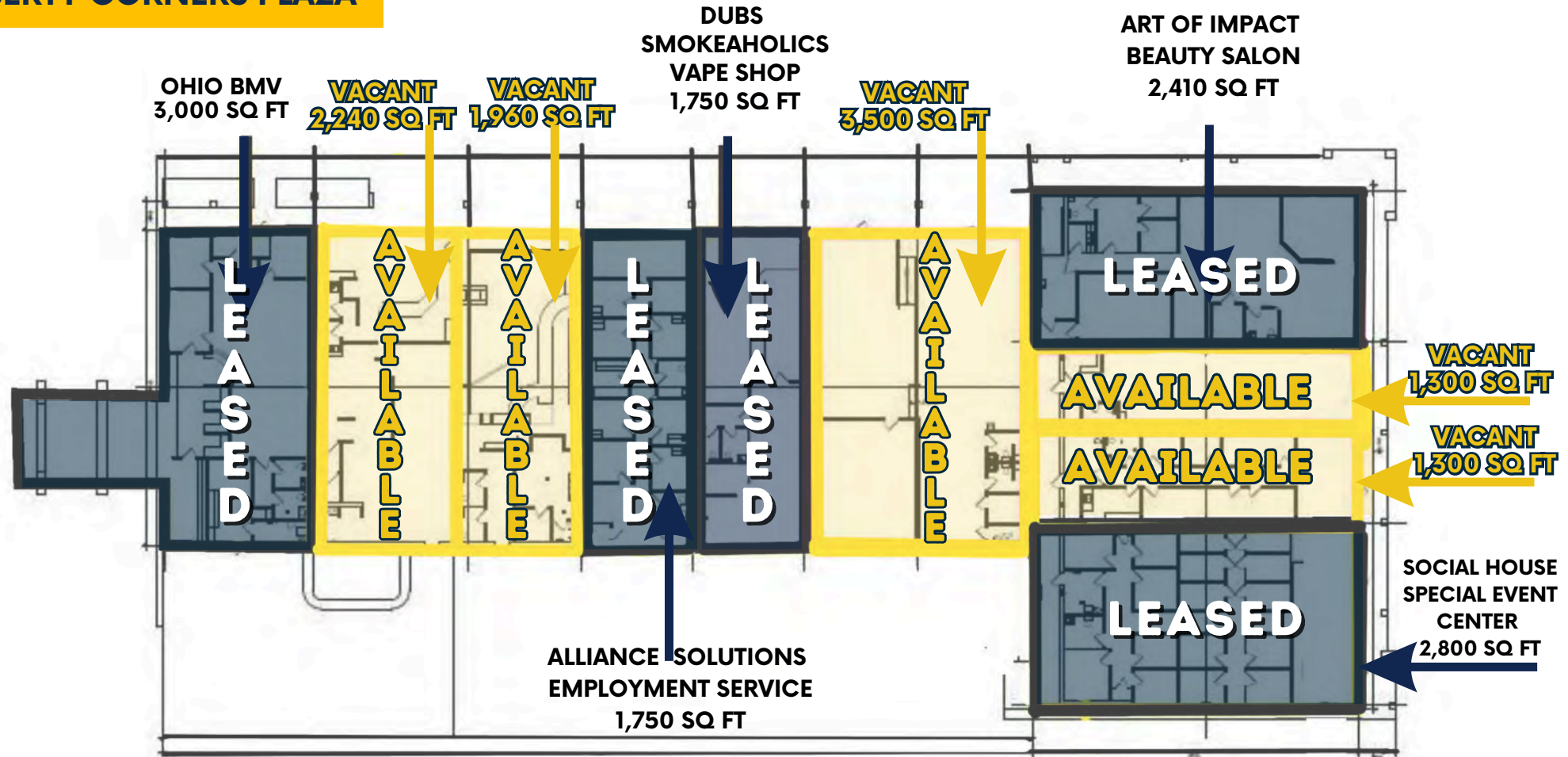
9330 Market Square Dr Streetsboro, OH 44241	3 mi radius	5 mi radius	7 mi radius
Population			
2024 Estimated Population	19,054	45,512	122,364
2029 Projected Population	19,322	45,442	123,057
2020 Census Population	18,724	45,826	122,191
2010 Census Population	17,442	44,143	118,720
Projected Annual Growth 2024 to 2029	0.3%	-	0.1%
Historical Annual Growth 2010 to 2024	0.7%	0.2%	0.2%
2024 Median Age	40.2	42.6	40.1
Households			
2024 Estimated Households	8,070	17,846	48,823
2029 Projected Households	8,386	18,166	50,037
2020 Census Households	7,858	17,867	47,575
2010 Census Households	7,058	16,664	44,637
Projected Annual Growth 2024 to 2029	0.8%	0.4%	0.5%
Historical Annual Growth 2010 to 2024	1.0%	0.5%	0.7%
Race and Ethnicity			
2024 Estimated White	83.4%	87.1%	84.7%
2024 Estimated Black or African American	8.7%	5.4%	6.7%
2024 Estimated Asian or Pacific Islander	3.8%	3.7%	4.4%
2024 Estimated American Indian or Native Alaskan	-	-	-
2024 Estimated Other Races	4.0%	3.7%	4.1%
2024 Estimated Hispanic	2.8%	2.5%	2.7%
Income			
2024 Estimated Average Household Income	\$119,130	\$163,027	\$138,096
2024 Estimated Median Household Income	\$92,497	\$120,781	\$104,430
2024 Estimated Per Capita Income	\$50,489	\$64,019	\$55,437
Education (Age 25+)			
2024 Estimated Elementary (Grade Level 0 to 8)	2.0%	1.3%	1.3%
2024 Estimated Some High School (Grade Level 9 to 11)	5.2%	3.4%	3.0%
2024 Estimated High School Graduate	33.2%	24.3%	23.8%
2024 Estimated Some College	15.0%	14.3%	14.6%
2024 Estimated Associates Degree Only	8.6%	7.4%	7.1%
2024 Estimated Bachelors Degree Only	21.0%	27.5%	29.1%
2024 Estimated Graduate Degree	15.0%	21.8%	21.0%
Business			
2024 Estimated Total Businesses	732	1,489	4,431
2024 Estimated Total Employees	12,261	19,008	58,015
2024 Estimated Employee Population per Business	16.7	12.8	13.1
2024 Estimated Residential Population per Business	26.0	30.6	27.6



RETAIL SITE PLAN

STREETSBORO, OHIO

LIBERTY CORNERS PLAZA



VACANT

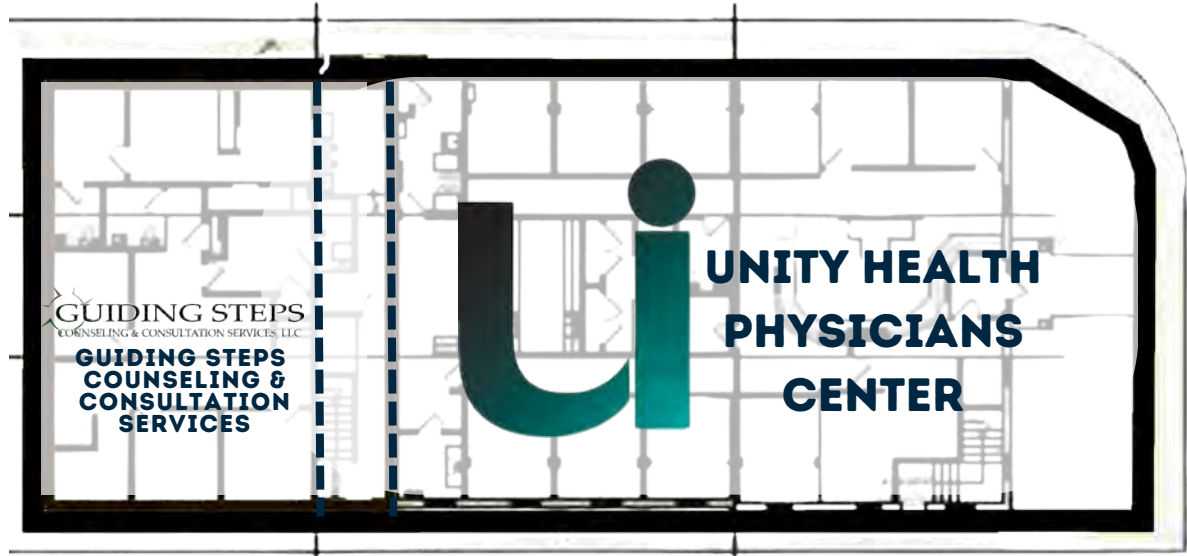
OCCUPIED

OFFICE SITE PLAN

STREETSBORO, OHIO

LIBERTY CORNERS PLAZA

**OFFICE 1ST FLOOR
LEASED**



**OFFICE 2ND FLOOR
5,230 SQ FT
AVAILABLE**



AERIAL VIEW

STREETSBORO, OHIO

LIBERTY CORNERS PLAZA



CURRENT TENANTS

STREETSBORO, OHIO

LIBERTY CORNERS PLAZA

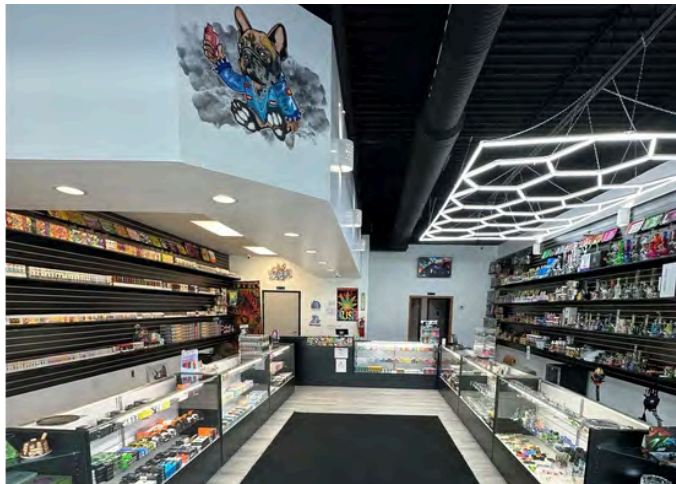
SMOKAHOLICS
VAPE SHOP



ART OF IMPACT
SALON



SOCIAL HOUSE
EVENT CENTER



CURRENT TENANTS

STREETSBORO, OHIO

LIBERTY CORNERS PLAZA

ALLIANCE
EMPLOYMENT SERVICE industrial solutions
powered by TALENTLAUNCH



ALLIANCE
EMPLOYMENT SERVICE



OHIO BMV



UNITY HEALTH PHYSICIANS



CONTACT INFORMATION

LIBERTY CORNERS PLAZA

Carla Massara

Office: 216-514-1400 ext 108

Cmassara@kowitzrealestate.com